



**OREXPLORE**  
TECHNOLOGIES

# Investor Presentation

June 2023

Perth | Santiago | Stockholm





# Disclaimer

## About Orexplore Technologies

Orexplore Technologies Limited (ASX: **OXT**) is a globally focused mineral technology business concentrating on advancing the commercialisation of its Technology Platform across the mining value chain within the global metals and mining sector. The Company's Technology Platform consists of the GeoCore GX10® hardware product and Orexplore Insight user interface software, that is continually advancing through its in-house multi-disciplinary research and development team based in Stockholm, Sweden.

Orexplore's first product, the GeoCore X10®, is a transportable X-ray rock mass scanning technology that converts drill core samples into a three-dimensional data set to provide a "through the rock" image of internal structures and texture in addition to elemental detections, and density.

The Company maintains core-scanning laboratories in Stockholm, Perth, and Santiago. Orexplore's talented global team includes consulting geologists, engineers, data scientists and physicists, and technology delivery experts. The Company continues to advance its solutions through development and delivery of customer solutions powered by its Technology Platform.

### For further information:

#### [investors@orexplore.com](mailto:investors@orexplore.com)

Brett Giroud  
Managing Director  
Ph: +61 8 9469 2900

Greg Haskis  
Chief Financial Officer  
Ph: +61 8 9469 2900

#### **Media enquiries:**

Elodie Castagna  
FTI Consulting  
Ph: +61 8 9321 8533

Steve Suleski  
FTI Consulting  
Ph: +61 8 9321 8533

## Disclaimer

This presentation has been prepared by Orexplore Technologies Limited ("the Company") for the sole purpose of providing a general update on the corporate, financial, operational and other activities. The information provided is in summary format and is not intended to provide a full and complete picture of the Company and its business activities.

This presentation is not intended as an offer, invitation, solicitation or recommendation with respect to the purchase or sale of any securities.

Nothing in this presentation should be construed as financial product advice, whether personal or general, for the purposes of section 766B of the Corporations Act 2001.

This presentation may contain forward-looking information, statements or forecasts that are subject to risks and other factors outside of the control of the Company. Any forward-looking information, statements or forecasts provided is/are considered reasonable in the circumstances and has/have been prepared in good faith and with all due care, but may differ materially from actual future results and performance. The Company and its affiliates or any of its directors, agents, officers or employees do not make any representation or warranty, express or implied, as to or endorsement of, the accuracy or completeness of any information, statements or forecasts contained in this presentation, and they do not accept any liability for any statement made in, or omitted from, this presentation.

This presentation should not be relied upon as a representation of any matter that an investor should consider in evaluating the Company or its business activities. Investors must make and rely upon their own enquiries and due diligence in relation to the subject matter of this presentation and investment in the Company. A potential investor must assess the merits or otherwise of an investment in the Company having regard to their own personal, financial and other circumstances.

Unless otherwise stated all the currency disclosures in this presentation are Australian Dollars.

The information included in this presentation is dated 13 June 2023.



# Who we are.

A diverse and global team of people empowering our customers to navigate global transitions via the transformational Geocore technology platform.

We believe in the sustainable extraction of minerals and metals creating value for all stakeholders to power a better world.

We are...

**300+**

YEARS EXPERIENCE  
ACROSS THE MINING  
VALUE CHAIN

**3**

CONTINENTS

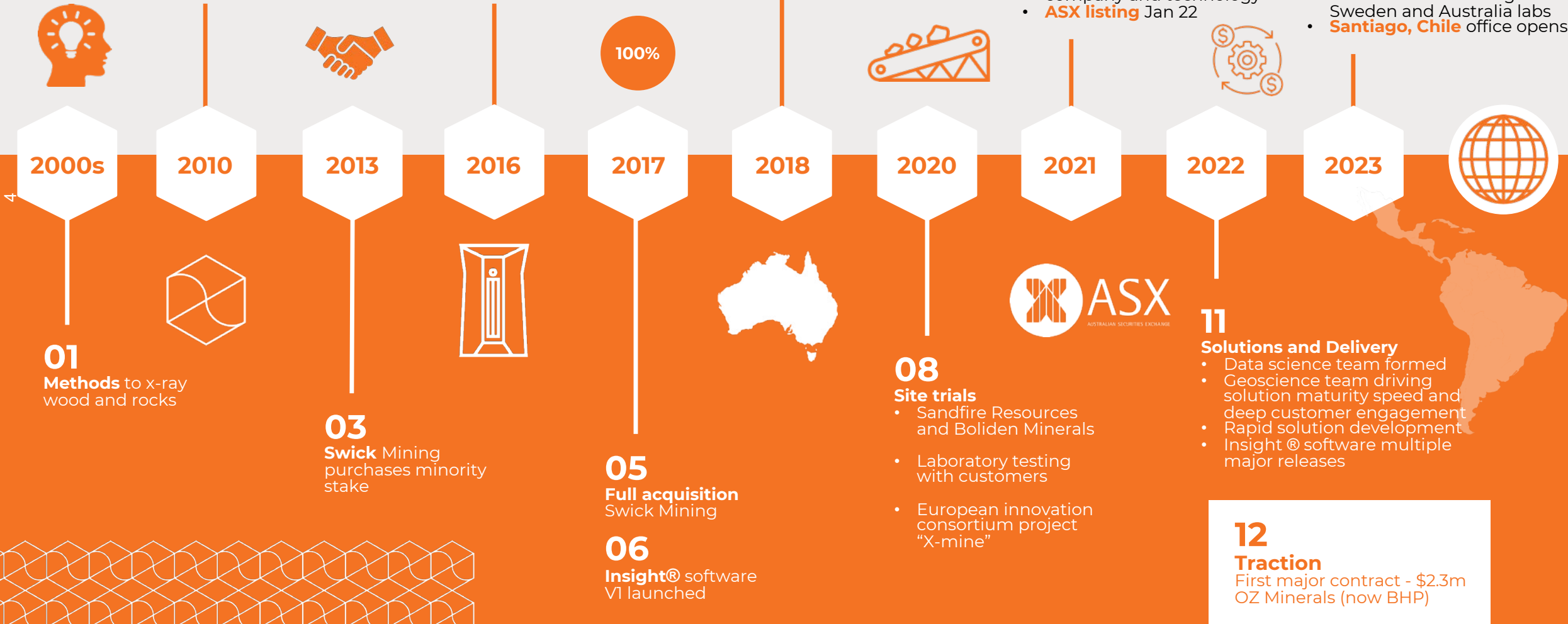
**25+**

EXPLORERS, GEOLOGISTS, PHYSICISTS, DATA  
SCIENTISTS, ENGINEERS, MATHEMATICIANS

ASX:  
OXT



# Commercialisation Journey





# Why?

The mining industry is under pressure to deliver the minerals and metals of the future in a sustainable way, through multiple global transitions.

Orexplora's Geocore technology platform is solving industry pain points and transforming existing processes across the mining value chain.

From decreasing exploration returns, grades, and project techno-economics to complex operational challenges, environmental management and beyond, Orexplore is delivering solutions every day.



## Digital Transformation

- Technology enabled business model evolution
- Productivity
- Industry 4.0



## Workforce Evolution

- Skills shortage
- Remote knowledge
- Transitory workforce
- Tech decision support



## Business

- Mining techno-economics
- Increasing global competition
- Doing more with less
- Risk quantification and control



## Automation

- Manufacturisation of mining
- Human-machine collaboration
- Autonomous systems & vehicles



## Metals Demand

- Energy transition
- Critical minerals & rare earths
- Electric vehicles
- Developing nations



## Sustainability

- Ethical investment
- Social value
- Emissions targets
- Natural environment
- Global targets



## Accelerating Value Chains

- Business models synchronising to accelerating markets
- Rapid reconfiguration to service market opportunities



# Key Investment Highlights.



## Transformational technology

- **True 3D** – CT scanner maps the entire 3D core volume, compared to typical surface only sensing
- Non-destructive** – drill and scan once to create digital twins for collaboration and future proofing
- Fast in the field** – results in an hour anywhere in the world
- Human-Machine automation** – Insight® platform enables machine learning powered analysis



## Scaling



- Contracts** – Gold Fields, Oz Minerals, and 10+ commercial OXT laboratory engagements
- Pipeline** – accelerating across three global regions
- Globally significant team** – industry leaders delivering transformation
- Hub and spoke** – centralised geoscience and support meets simple remote scanning
- Reliable, simple to operate** – GeoCore X10® field units



## Solutions adoption

- Geoscience solutions** – servicing a broad set of customer types
- Solution suite** – exploration, studies, operations, critical minerals, ESG
- Solving industry pain points** - structural, persistent opportunities
- Creating customer value** - as they navigate global transitions
- Simple operation** - with centralised remote support



## Global growth markets

- Critical minerals enabler** - uniquely suited technology unlocking deposits and projects
- Global transition enabler** – digital, automation, workforce, ESG, energy
- Macro-economic scenarios** - creating value through the cycles
- Large Total Available Market (TAM)** - multiple commodities
- Across the Mining Value Chain** - exploration, studies, projects, operations and ESG

# Pipeline.

## The road ahead.



Our solutions are now rapidly advancing and starting to be pulled into regions by our customers.

1.

### Latin America

*Entering the region and accelerating pipeline flow*

- Gold Fields Chile
- Regional tier-1 miners - deep engagement and opportunity scoping
- Initial core scanning for multiple potential customers starting through Santiago office

2.

### Australia

*Accelerating sales outreach and attacking Critical Minerals*

- Multiple tier-1 and other operators scanning core in OXT laboratories and validating solutions
- Multiple Critical Minerals customers scanning in laboratories - developing new industry solutions
- Leveraging solutions from OZ Minerals project

3.

### Rest of World

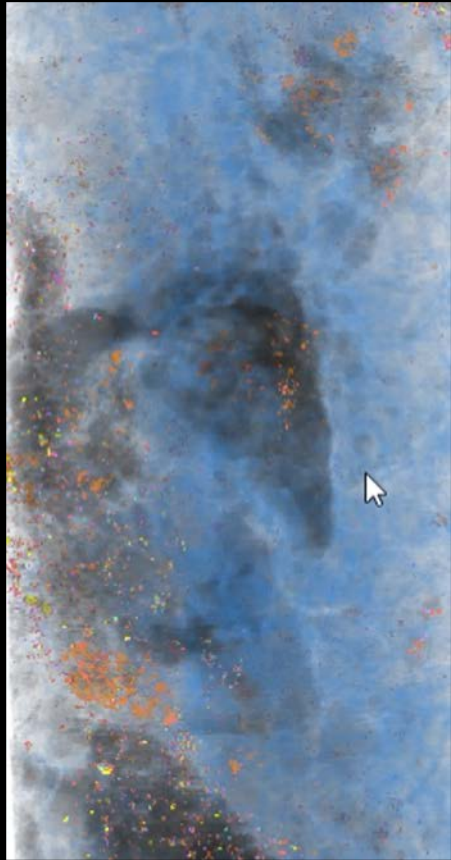
*Responding to Tier-1 customer pull and defining the pipe*

- Deep engagement post commercial lab trials with tier-1 on African site
- Project scoping post commercial lab trials with European customer
- Multiple European customer commercial lab trials in Stockholm
- Early North American partnering out-reach

**Brett Giroud**  
Managing Director



# X-ray Powered Solutions.



## True 3D scanning unlocks powerful solutions

The Geocore X10 scans the entire 3D core volume creating a unique 3D data set that powers a suite of new products across the mining value chain from exploration to closure.

- The technology platform enables geologists and mining professionals to analyse remote site core within 15 minutes of placing it in the machine
- Improving exploration outcomes, unlocking ore-bodies, accelerating resource to reserve conversion, and saving time and resources within customer's operations
- A sustainability enabler to advance precision mining and support the ESG transition



Fast



Non-destructive



Human - Machine



Multi commodity



Value Creation





# We get rocks!

A single digital model straight from site can potentially replace multiple traditional processes

## OXT delivers the full puzzle

A full digital twin of the drilled core that unlocks both elemental composition **and** mineralogy in a single solution - in the field in less than 15 minutes, that enables

- traditionally siloed groups to “drill once” and collaborate around a single digital model
- directly connect remote SME’s and study teams to deposits as they are drilled
- provide near real-time decision support to operations and explorations teams
- the creation of a digital core farm – a unique asset that can be used for current and future techno-economic assessments



## Versus jigsaw pieces

- delivering pieces of the puzzle – elemental concentrations through the labs or mineralogical information through other core scanning techniques
- waiting and paying for slow and expensive assays to build grade-dominant models
- scanning for minerals on site and waiting for remote analysis and reporting



# Solutions across the mining value chain.



## Exploration

Targeting tool

Mineralisation indicators and vectors guiding campaigns

EXT



## Resources to Reserves

Accelerating developments & acquisitions

3D field information supporting accelerated conversion and techno-economic reviews

RRR

OBK

SDM



## Extraction Economics

Matching methods to deposits

Mine design and process selection through rock characterisation e.g., ore sorting

OVX

RQD



## Operations

Production & Analysis

Optimising core sampling and dynamic grade control

GDC

SOO

LGC

OST



## ESG

Environmental management

Acid drainage and waste impact monitoring

ARD



EXT - Exploration Targeting Extraction    OBK - Orebody Knowledge    RRR - Resource to Reserve Risk (Reduction)    SDM - Smart Domaining    OVX - Orebody Value    RQD - Auto RQD    GDC - Grade Control    SOO - Sample Optimisation    LGC - Log Checker    OST - Ore Sorting    ARD - Acid Rock Drainage





# Solution Delivery.

11

The Geocore technology platform produces data products connected through multiple methods to Orexplore Insight® software and standard industry software packages.

API (application process interface), CSV and other delivery formats are available to ensure seamless connectivity to standard industry modelling, operations, and field-based systems and processes.



Core logging field tablet integration

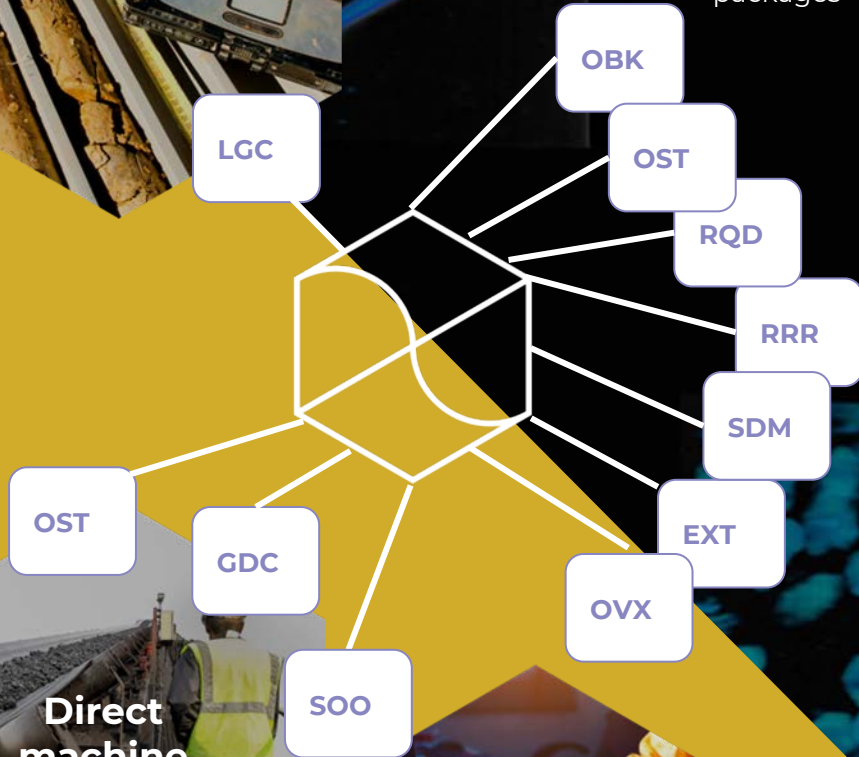


Direct machine integration

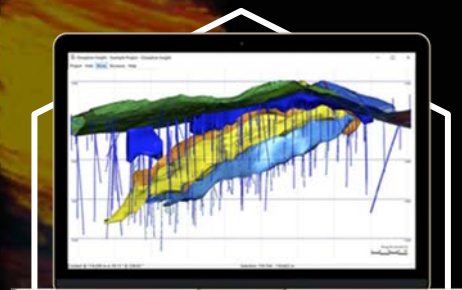


Operations systems

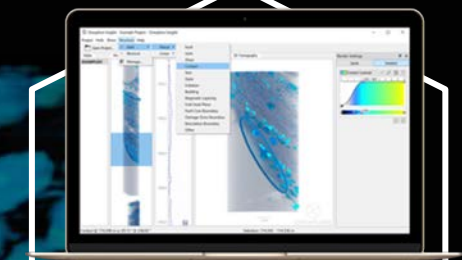
Direct connection to operational and mechanical systems



Solutions delivered through Orexplore Insight® and integrated to standard industry geology and mining packages



Industry modelling systems



Orexplore Insight®





# Increasing Market.



South America



Australia



Europe



12



- Gold
- Base metals
- Other metals

# Increasing Market.

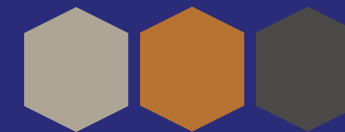
Drilled core  
**111.6** <sup>CY23<sup>\*1</sup></sup>  
 Million Metres



**Precious Metals**  
 Gold



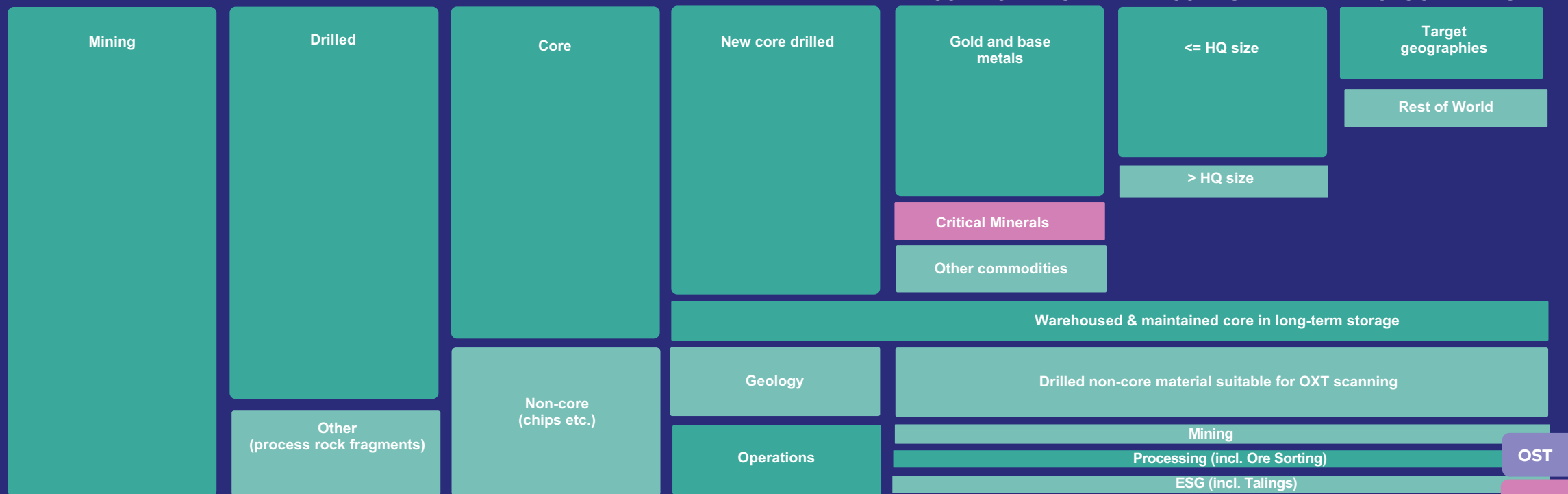
**Critical Minerals**  
 REE's & Battery



**Base Metals**  
 Nickel, Copper, Zinc, Lead

**TAM** <sup>\*2</sup>

**SAM** <sup>\*2</sup>



● Key market segment

● Alternative marketing / potential future delivery

<sup>\*1</sup> - See Table 7 of Minex Consulting report from Prospectus  
 Source: Minex Consulting – Independent Technical Report – On the available global drilling market – see Orexplore Prospectus 22 November 2021 – Annexure C – available at [www.Orexplore.com](http://www.Orexplore.com) – Market Segments Modified From: 18/04/2023. Images for communication purposes only.

<sup>\*2</sup>  
**TAM** – Total Available Market (all drilled core per annum)  
**SAM** – Serviceable Available Market – reduced market size within TAM due to technology platform; business strategies and other natural and chosen constraints

# Business Model.

## Site Scanning

- Machine transported to customer site
- Medium to high volumes of over 1500 metres per month (resolution dependent)
- Larger customers with machines embedded into site workflows
- Continuous rapid scanning

## Orexplore Insight® Software

- User interface platform
- Visualises easy-to-interpret scan results
- Enables remote SME's to view and analyse results rapidly from the field
- Supports the analysis of structures, faults, fractures, fabric, density and lithology
- Illustrates detected elements and emerging 3D modelled geochemistry
- Ongoing machine learning / human analysis platform development

## Laboratory Scanning

- Core transported to Perth, Santiago or Stockholm laboratories
- Initial customer test ground to leverage into site deployment
- Typically, lower volumes of several metres to 1,000 metres per engagement
- Product development with clients

## Geological Consulting

- Drives adoption – “Geo to Geo” selling of transformational technology
- Supports customer integration into site processes and workflows
- Working with customer champions to articulate and promote value within the customers organisation
- Close collaboration with customers drives solution maturity speed and new solution development



# Commercialisation.

**Traction** – \$2.35m OZ Minerals (now BHP)

**Revenue (2022)** – \$1.2m - commercial field deployments and OXT laboratory scanning

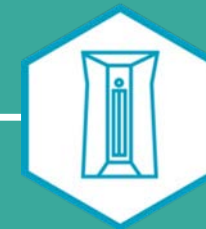
**Sales** – growing global pipeline across geographies, metals and customers

**Adoption** – tier 1 and other mining companies actively adopting

**Laboratories** – developing the solution suite through commercial engagements

**Operations** – safely scanning 24/7 in the field on commercial deployments

**Financial discipline** – robust financial management



## Solutions

**Data science team** – transforming field sensed geology to produce data products powering solutions across the value chain

**Customer driven** – software solutions developed through rapid collaboration

**Demonstrated value** – of new-to-industry solutions through case studies

**Prioritisation** – focused on Tier-1 opportunities and resellable solutions

## Technology

**CX10®** – dual energy capability unlocking critical minerals solutions

**Insight®** – quarterly releases of customer requested functionality

**Support** – engineering and maintenance to ensure seamless field deployments and operations

**R&D** – next generation sensor development and future horizons



# Recent Progress.

## Commercialisation

**Operations** – reliably and safely scanning core in the field 24/7 and connecting data streams to existing client geological models and systems

**Gold Fields Salares Norte contract** – initial ~\$430k commercial field deployment for Orexlore’s “Smart Sampler” solution (SOO)

**Latin America market entry** – robust pipeline growth and customer engagement in the region

**Critical Minerals market** – unique technology fit driving adoption rates of ore sorting, grade control and other solutions

**Solutions development** – customer driven solution development through the OZ Minerals and other OXT laboratory projects - building our globally resellable software solutions



“

**“Orexlore allows us to understand sulphide deportment and mineral association throughout drill core and waste materials in a truly unique manner.”**

**Manager - Hellas Gold**





RRR

OBK

SDM

OVX

RQD

# Recent progress.

## Solutions

**Auto RQD** – linking structures to processing options

**Smart domains** – challenging established block model boundaries

**Digital test proxies** – expanding limited slow and expensive test work across ore bodies

**Density** – high resolution automatic density reducing the inherent risk of “tonnes in the ground”

**Recoverability** – particles, elements, mineralogy and more driving optimised process options to maximise recoverability and study techno-economics

ENVIRO  
COPPER  
THE INVISIBLE MINE

Think & Act  
Differently

OZ  
MINERALS



“

“We are building brand new solutions for the Industry - fed directly from near-real-time field sensed data and connected directly to a rapid study team”

Stephen Coward – Principal Geoscientist Orexplore



# Recent progress.

## Technology

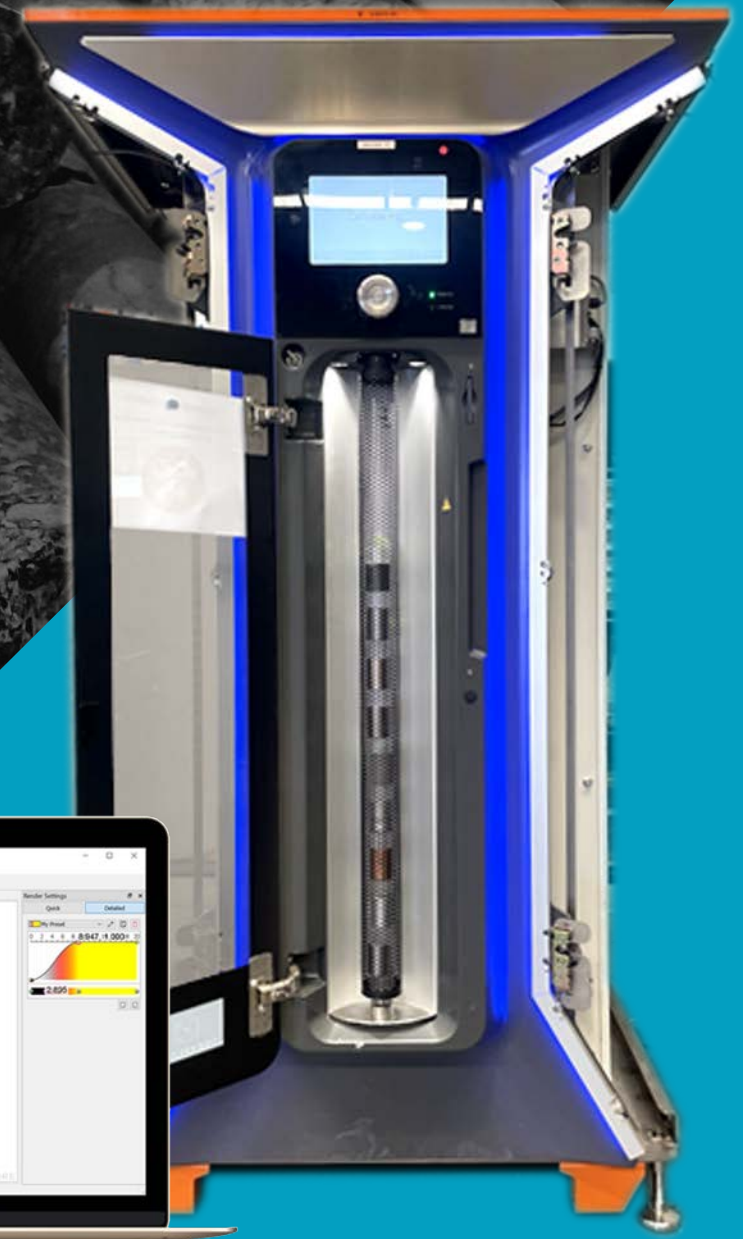
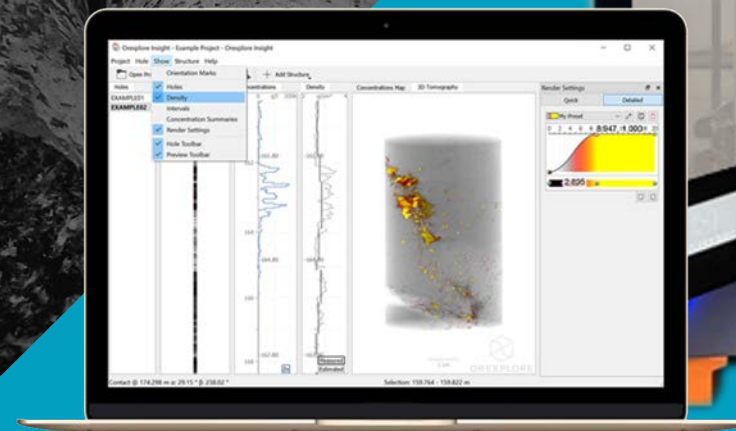
**HQ machine** – now scanning up to HQ core size – circa 40% serviceable market increase

**Dual Energy CT** – a step change in the power of the results from the CT scanner, unlocking in-field ore sorting solutions for critical minerals customers

**Core engine** – major advances in the digital core models driving rapidly improving near-real-time elemental and mineralogical outputs direct from the field

**Orexplore Insight®** – customer driven quarterly releases of new functionality

**Future horizons** – advancing in-house designed next generation sensors





**Think & Act  
Differently**



**“Orexplore is delivering truly transformational building blocks for our business as we change the way deposits are sensed and deliver data-driven process design.”**

**Brett Triffett – OZ Minerals**



# Operating 24/7. Oz Minerals.

Operating in a harsh and remote environment, the Orexplore team and technology platform is safely scanning drill core 24 hours a day, 7 days a week for OZ Minerals.

Using remote satellite links, the team has connected the rapid field scanning to the accelerated study team, who transform the data streams into valuable information that is integrated into standard OZ Minerals geological packages.

This first major field-deployment for the business has been pivotal to build operational capability and capacity and refine Orexplore’s solution delivery model in preparation for scaling.





20

# Latin American market entry

Orexlore enters the Latin American market with its first commercial field deployment in the region to Gold Field's Salares Norte mine.

Establishing a Santiago office to receive core from a growing regional pipeline of Tier 1 and other customers.



SALARES NORTE



PARAGUAY

URUGUAY

ARGENTINA

CHILE



# Salares Norte Chile.

## Entry to operating mine

Integrating the technology into ongoing mine operations, through an Annual Recurring Revenue (ARR) style installation at the Gold Fields Salares Norte gold and silver mine, in Chile.

Initial \$430k agreement for the scanning and analysis of approximately 3,000m of drill core as part of the larger scale annual exploration program.

Roll-out of Orexplore's new sample optimisation solution (SOO), reducing the drill core sent to downstream laboratories.



**“Working with our in-house team of geologists, data scientists, physicists, engineers and mathematicians, the options to innovate and combine data products into unique solutions are endless.”**

**Heidi Pass - Chief Geoscientist & Chief Product Officer**



S00



# Solutions.

## Sample optimisation

22

Explorers and operating miners are under pressure to do more with less and delays associated with receiving sampling results often have significant schedule and cost impacts.

Orexplora's technology platform allows customers to pre-screen the entire 3D core volume and then sample to optimise the overall sampling process, saving time, money, and the associated emissions from cutting, transporting and destroying core through traditional processes.

### Common Current Processes

- Routine continuous sampling of all / most core = **excess \$, processing, transport and time**
- Geologist uses *surface-only, visual inspection* of core to subjectively select samples for assay = **sample bias, possibility to miss element-bearing samples**
- Core transport and assay processes = **emissions, cost, delays, destruction of core**



SCAN CORE



SAMPLE SELECTION MODEL



SEND TO CORE FARM



SUBMIT TO LAB



# Critical Minerals



**Precious Metals**  
Gold



**Critical Minerals**  
REE's & Battery



**Base Metals**  
Nickel, Copper, Zinc, Lead

## 23 Critical Minerals are increasingly required in modern industries across all supply chains

Among all critical minerals, lithium, graphite, cobalt, nickel, REEs, manganese, copper, silicon, chromium, and zinc require the largest percentage growth by 2050 to meet the demand of growing low-carbon energy technology under the Net Zero Emissions by 2050 Scenario (NZE).<sup>1</sup>

The net zero pathway is expected to **increase critical minerals demand by almost 6x between 2020 and 2050**, from less than 10 million metric tons (Mt) to roughly 43 Mt.

## Global rare earth element (REE) mines, deposits and occurrences (May 2021)

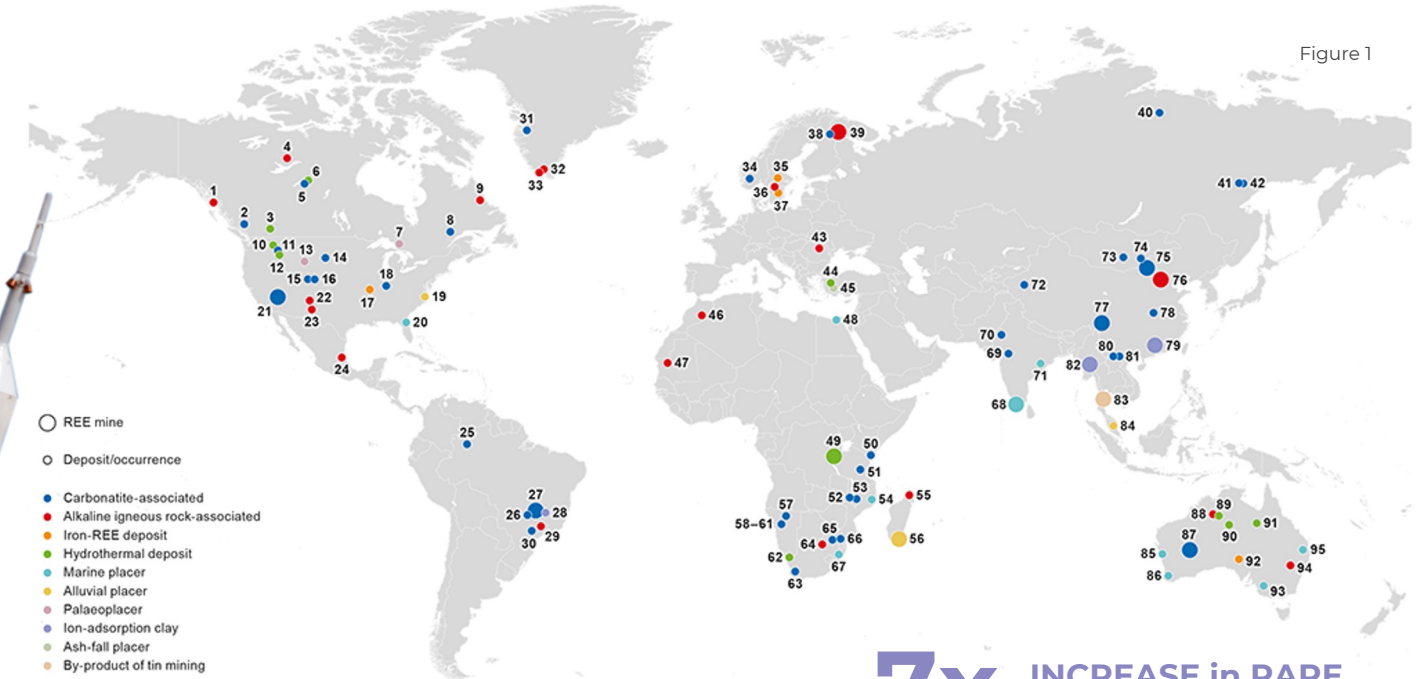
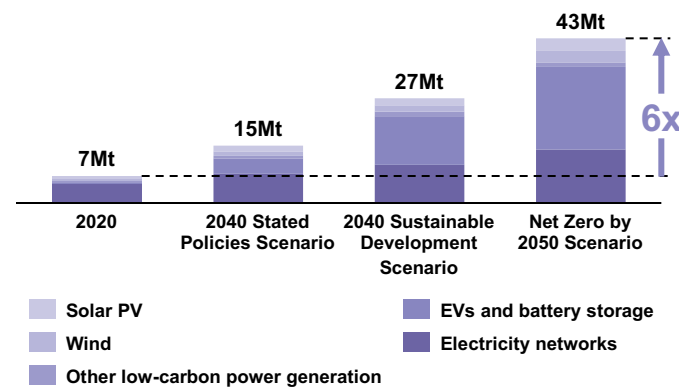


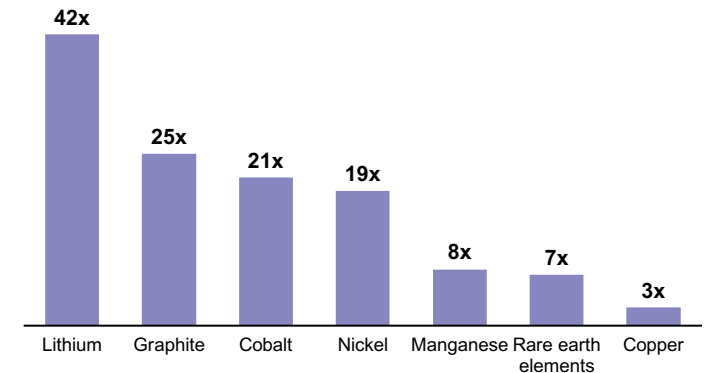
Figure 1

**7x INCREASE in RARE EARTH DEMAND**

### Total mineral demand for clean energy technologies by scenario, compared to 2020 (Mt)



### Growth in Mt demand for selected minerals from clean energy technologies for Sustainable Development Scenario (2040 as a factor of 2020)



Note 1: Columbia SIPA (2023) Critical Minerals Demand Growth in the Net-Zero Scenario

IEA (2021); The Role of Critical Minerals in Clean Energy Transitions

IEA (2021); The Role of Critical Minerals in Clean Energy Transitions



# Critical minerals.

## Unique Technology - Market intersection

24

**Dual Energy** – a step change in the power of the results from the CT scanner, unlocking in-field ore sorting solutions for critical minerals customers

**High energy XRF** – delivering excellent REE discrimination compared to other technologies

**New solutions** – ore sorting, grade control and others

**Project enabling** – proving orebody sortability and ability to undertake operational grade control



Mining is critical to decarbonisation. Solar plants, wind farms and EVs are more minerals intensive than hydrocarbon equivalents





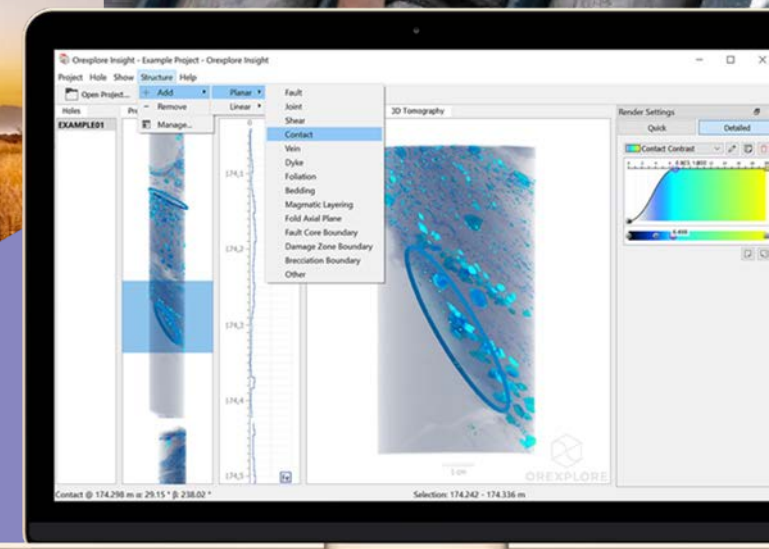
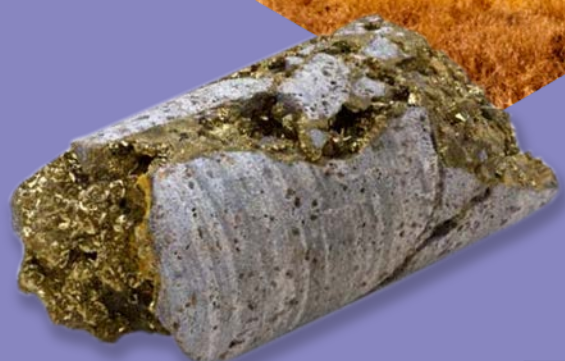
OST

# Solutions.

## Ore Sorting

As deposits become harder to discover and more marginal in response to rapidly changing global macro-economics, customers are seeking solutions to upgrade their techno-economics. Oreplore is working with customers across base and precious metals and critical minerals to develop ore sorting solutions that can help them achieve these outcomes.

By adding in deposit scale “sortability” information into existing geological block models, the potential of ore sorting economics can be established during early study phases, unlocking the ability to optimise process flow sheet design early in the investment lifecycle.





**OREXPLORE**  
TECHNOLOGIES

# Contact.

Reach out to Orexplore to learn more about our potential.

[info@orexplore.com](mailto:info@orexplore.com)

**Perth | Santiago | Stockholm**

[www.orexplore.com](http://www.orexplore.com)



## Fast

industry leading  
**Drilled to insight**  
*remote analysis within 15m*



## Mobile

exploring with you  
**Anywhere in the world**  
*rapidly transportable containers*



## Sustainable

scan core  
**Transport information**  
*save time, money and emissions*





# Appendix.



# Corporate Structure | ASX: OXT

Well positioned to accelerate solution adoption across a growing customer footprint.

## Capital Structure

Shares on issue  
**103,664,196**

Performance rights  
**8,293,136**

Share Price (12.06.23)  
**\$0.051**

Market Cap (12.06.23)  
**A\$5.29m**

Q1FY23 Revenue  
**~A\$821k**

Cash position (31.03.23)  
**~A\$4.79m**

**No debt**

## Led by Experienced Board & Management

**Alan Bye**  
Non-Executive Chairman

**Brett Giroud**  
Managing Director

**Kent Swick**  
Non-Executive Director

**Stefan Sädbom**  
Non-Executive Director

**Stuart Carmichael**  
Non-Executive Director

**William Randall**  
Non-Executive Director

**Frank Campagna**  
Company Secretary

28

## Top Shareholders<sup>1</sup>

Circle 5 Management Pty Ltd.

**19.00%**

Kent Jason Swick

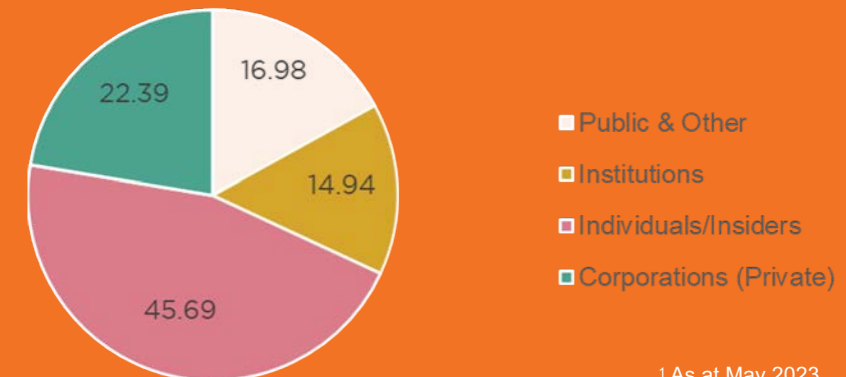
**15.00%**

Castle Point Funds Management Ltd.

**8.56%**

## % Shares on Issue

## Shareholder Structure

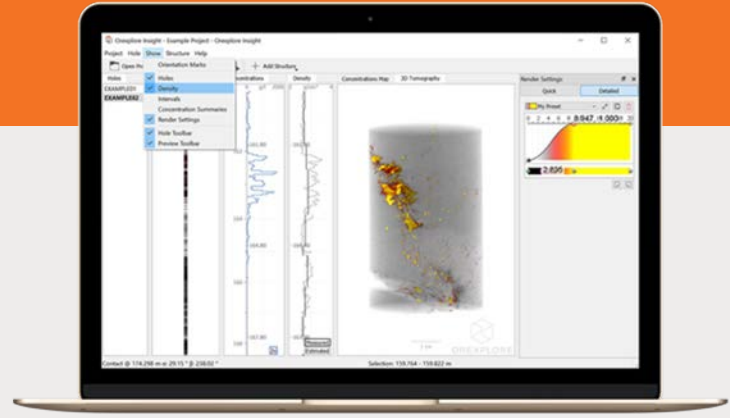


<sup>1</sup> As at May 2023  
Source: S&P Capital IQ





# Technology offering.



29

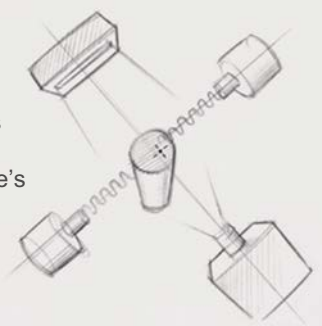
## GeoCore X10 ®

### High Energy X-ray Source

XRT (X-ray transmission) CT provides 'through-the-core' structural 3D imaging used to estimate potential elemental composition, geological structure, texture & density.

### Spectrometers

XRF Spectrometers provide elemental detection at the core's surface.



- **Fast:** scans four x 1m cores at a time, in less than 15 minutes per metre.
- **Versatile:** non-destructive scanning of both core & non-core (chips etc.) material.
- **Easy:** requires minimal skill set to operate. One technician can operate up to 3 machines.

## Insight software platform

Orexplora's software system, **Orexplora Insight®**, provides users with the ability to interact and analyse the scan results obtained from the GeoCore X10®. It allows for 3D-visualisation of the core and the ability to further analyse the resource and physical information, providing rich capability to understand, interpret and extract key information contained within the sample such as:

- Geological structures
- Lithology / texture
- Density – high resolution
- Rock mechanics & physical characteristics e.g. RQD
- Particle detection
- Detected elements
- Emerging geochemistry



# Mining transitions.

Sustainable pain-points are combined with transformational new solutions to guide the strategic focus of Orexplore



## Digital Transformation



## Sustainability



## Business



## Automation



## Metals Demand



## Workforce Evolution



## Accelerating Value Chains



### Exploration

- Diminishing discoveries
- Campaign efficiencies
- Pressure to become a producer quickly



### Operations

- Productivity pressures
- Skills shortages & changing ways of working
- “Do more with less”



### Corporate

- Evolving business models
- Global competition
- Complex dynamic value chains
- Synch to accelerating markets
- Access to capital



### Stakeholders

- Continually expanding
- Accelerating expectations
- Demonstrating leadership across domains – ESG, Carbon



### Projects

- NPVs under pressure
- Challenging techno-economics
- Technology adoption
- Evolution of engineering



## Orexplore provides traction through transitions

- Decision support
- Operational transformation
- Corporate value
- Risk and Sustainability

# Your challenges, our solutions.

**X** Diminishing exploration returns



## Exploration Targeting tool

Mineralisation vectors derived from mineral indicators, alteration states, and rock characterisation.

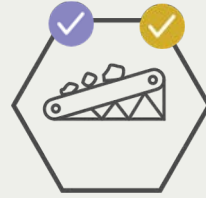
**X** Slow resource to reserve conversion



## Resources & Reserves Accelerating developments & acquisitions

Unique 3D insights from the field supporting accelerated conversion and techno-economic reviews.

**X** Mining blind



## Mining Don't mine blind

Operationally embedded units for grade control improvements to assist dynamic mining decisions.

**X** Project techno-economics



## Project Economics Matching plants to deposits

Ore sorting and rock characterisation to “best fit” process plant design with orebodies to drive NPVs.

**X** Production efficiencies



## Operations Production & Analysis

Optimising core sampling and analysis through pre-filtering and driving operational efficiencies

**X** Assay delays & costs



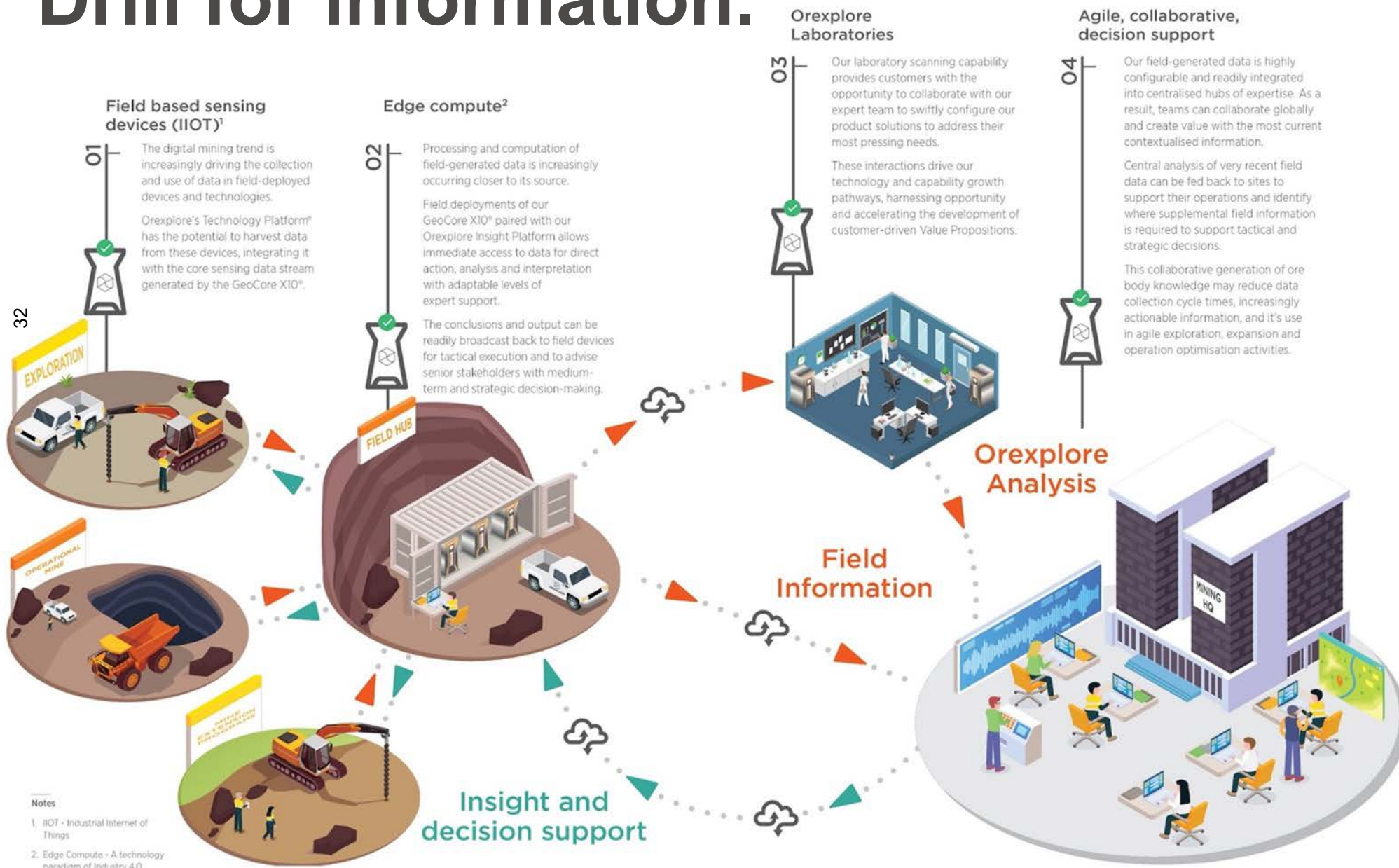
## ESG Environmental controls

Dynamic field based environmental risk controls – such as acid drainage and waste impact monitoring.

**X** ESG value creation & risk control



# Drill for information.



32

Notes  
 1. IIOT - Industrial Internet of Things  
 2. Edge Compute - A technology paradigm of Industry 4.0



**Fast**

*industry leading*  
**Drilled to insight**  
*remote analysis within 15m*



**Mobile**

*exploring with you*  
**Anywhere in the world**  
*rapidly transportable containers*



**Sustainable**

*scan core*  
**Transport information**  
*save time, money and emissions*



# Technical capabilities.

## Geochemical

Detected elements and emerging geochemistry

Elements - continually improving the accuracy and number of elements that can be detected.

Dense particle detection

Detection of the location of dense particles within the entire core down to 100-micron particle sizes.

## Geological

Lithology / texture

Semi-automatic identification and logging of lithological features.

Rock mechanics

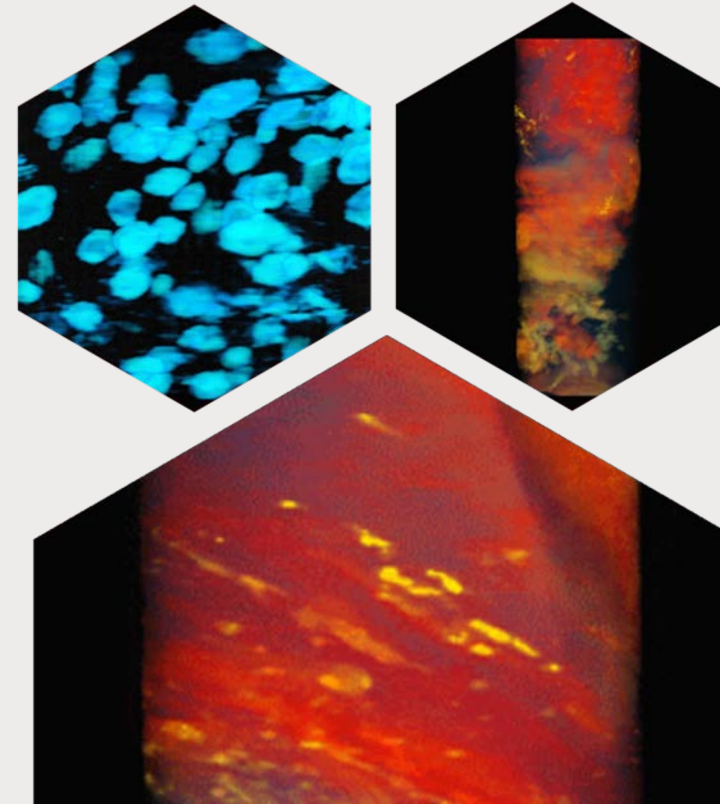
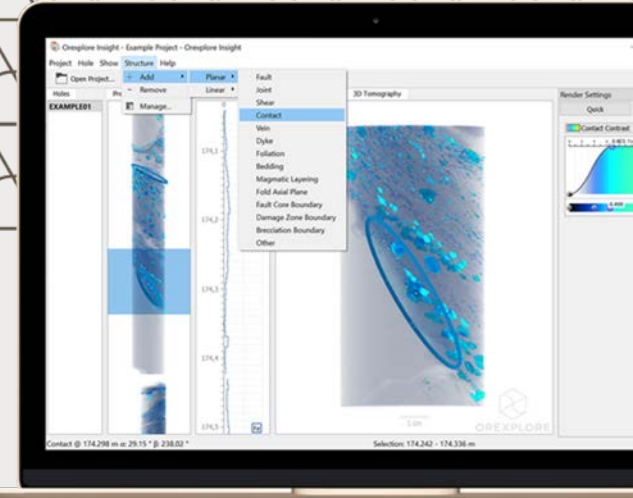
Collection and annotation of rock mass data incl. rock quality designation (RQD), detailed assessment of joint orientation and infill.

Structures

Bedding planes, veins, folds and lineations through the core – oriented and exportable to 3<sup>rd</sup> party software.

Density

Accurate density measurement of each core sample. Inferred density up to 25 sample points per metre.



# Key Personnel.

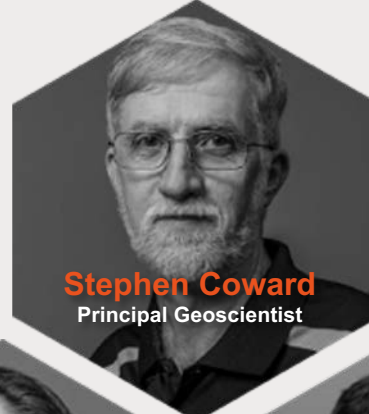
34



**Heidi Pass**  
Chief Geoscientist &  
Chief Product Officer



**Thomas Drage**  
Engineering Manager



**Stephen Coward**  
Principal Geoscientist



**Alexander Hansson**  
Principal Researcher



**Brett Giroud**  
Managing Director



**Shannon Fleming**  
Marketing, Communications  
& Logistics



**Mikael Bergqvist**  
Chief Technology Officer



**Greg Haskis**  
Chief  
Financial Officer



**Elvis Stansvik**  
Product lead - Insight



**Kath Hodgson**  
Operational sales



**Christian Haggström**  
Product lead – GX10

# Board of Directors.



**Alan Bye**  
Non-Executive Chairman

Alan is a highly respected industry figure with strong expertise on the innovation of the resource industry – covering both digital and extractive innovation technologies. Alan is the co-founder and Managing Director of Imvelo Pty Ltd, a Non-executive Director at Scitech, and holds council positions at SmartSat CRC & CSIRO. Alan has a Ph.D. in Mining from the University of KwaZulu-Natal.



**Brett Giroud**  
Managing Director

Brett brings over 24-years of technology delivery, creating and leading large high performing teams. He has driven mining industry transformation and delivered systems and technology across over \$15B of capital projects. Brett has created and led business units, lectured on future systems and is a sought after advisor to start-ups. Brett was previously the Chief Engineer (ICT) for Jacobs (SKM) Engineering, and APAC head of Strategy and Transaction Services for Worley (Advisian). Brett has a Bachelor of Engineering & an MBA from the University of Western Australia



**Kent Swick**  
Non-Executive Director

Kent is a Mechanical Engineer with over 30 years' experience in civil construction, mining maintenance and surface and underground mineral drilling. Kent successfully founded and has led (Managing Director) Swick Mining Services Ltd since its inception. Kent has a Bachelors of Engineering from the University of Western Australia and has completed the Owner/President Management program at Harvard Business School



**Stefan Sädbom**  
Non-Executive Director

Stefan is a senior exploration geologist with over 35 years' experience in exploration and underground mining. Through various entities, Stefan has been deeply involved in several Swedish and European innovation projects relating to the improvement of the mining industry. Stefan sits on the board of a number of other Swedish listed and non-listed entities. Stefan holds a Bachelors of Geology from Uppsala University



**Stuart Carmichael**  
Non-Executive Director

Stuart is a Chartered Accountant with over 20 years' experience in the provision of corporate advisory services both within Australia and internationally. Stuart is a Principal and Director of Ventnor Capital Pty Ltd and Ventnor Securities Pty Ltd which provides corporate and financial advice to small-cap ASX listed companies. Further, Stuart acts as a Non-Executive Chairman / Director for a number of other ASX listed companies

**Will Randall**  
Non-Executive Director

Mr Randall has over 25 years of operational and executive experience in the Global Commodity and Mining Industries, operating across cultures, geographies, products and supply chains. Mr Randall was based in Asia from 1997 to 2020 with a critical focus on business development and supply chain strategies. He has served on the boards of various listed and private companies over this period.